

A NEW VENTURE THEATRE PRODUCTION 2020

THE WINTERLING



by
Jez Butterworth

directed by
Steven O'Shea

NVT

**NEW
VENTURE
THEATRE**

Bedford Place, Brighton BN1 2PT

PERFORMANCES:

Friday 17th to Saturday 25th January 7.45 pm

Sunday matinee 19th January 2.30 pm

No show Sunday or Monday evening

BOX OFFICE INFORMATION: 01273 746118

ONLINE BOOKING: www.ticketsource.co.uk/newventuretheatre

Registered Charity No. 268607

£1

An amateur production by arrangement with Nick Hern Books

The Winterling

by Jez Butterworth

*“You fall asleep out here,
something creeps up and eats you.”*

Over a decade ago I attended my first production at the NVT. It was *Mojo* by Jez Butterworth. It was the first play of Butterworth's that I had seen, and I'm delighted all this time later, to be a part of presenting this, another example of his outstanding body of work. Multi-award winner and author of such modern classics as *Jerusalem* and *The Ferryman*, this particular piece has perhaps, been somewhat overshadowed by the huge success of his later plays. It remains however one of his seminal works, investigating, as the author put it, 'the question as to whether there is any mercy in the world'.

First performed at the Royal Court in 2006, the play deploys his trademark pump-action dialogue as the characters' power plays become increasingly desperate and deadly. Verbal exchanges, seemingly polite and genuine, are in fact malicious and destructive in nature. Language is utilised as a weapon, according to the psychological or strategic needs of the present, to control, dominate and humiliate. Here humankind, like nature, is trapped in a remorseless struggle for survival. Taut, tantalisingly enigmatic and savagely funny – *The Winterling* underlines Butterworth's reputation as one of the leading figures in British drama.

As always, I am deeply indebted to the hard work and commitment of the theatre staff, production team and cast. I would like to express my immense appreciation to them all.

Steven O'Shea (Director)

Many thanks to Mike Wright and the team at Seaford Martello Museum for the loan of the mangle, and to Rod Lewis, Mike Stubbs, Uli Schilling and Tamsin Mastoris; as always we would like to express our appreciation and gratitude to the front of house and box office teams.

Setting: *An abandoned farmhouse in the centre of the forest of Dartmoor.*

Time: *Act One begins in the dead of winter.*

Act Two begins in the previous winter.

Act Three takes place during the first winter again.

Cast

(in order of appearance)

West	Jonathan Howlett
Draycott	Mark Lester
Wally	Stuart Curlett
Patsy	Thomas Hobart
Lue	Charlotte Hesk

Production Team

Director	Steven O'Shea
Stage Manager	Bryony Weaver
Assistant Stage Managers	Gabrielle Bowring, Terri Challis, Caroline Hynds Caroline Pumford & Alison Whitehead
Production Manager	Kasha Goodenough
Lighting Design	Strat Mastoris
Sound Design	Ian Black
Costume Design	Ian Hollands
Lighting Operation	Alex Epps
Sound Operation	Erica Fletcher & Ian Black
Set Construction	Simon Glazier, George Walter, Peter Wood, Richard Dowdall, Peter Meekings & Monika Schuettbacher
Set Dressing	Delphine du Barry, Gabrielle Bowring, Kasha Goodenough, Caroline Pumford & Bryony Weaver
Make-up	Julie Monkcom
Poster Design	Strat Mastoris
Publicity	Nina Evans
Properties	Bryony Weaver & Gabrielle Bowring
Special Effects Consultant	Deej Johnson
Photography	Strat Mastoris
Voice Coach	Christine Stubbs
Health & Safety	Ian Black
Costumes supplied by	Gladrags

The production runs approximately 2 hours & 10 minutes, including a fifteen minute intermission.



Mark Lester (Draycott)

Mark has been back at the NVT for almost 3 years now. He has appeared in *Deep Blue Sea*, the award-winning *Anna Christie*, *Jumpy*, *The Father* and *Pickwick and Weller*. He made his directing debut at NVT, directing James MacLure's *Laundry and Bourbon* and *Lone Star*. He recently joined the Artistic Director's team and is delighted to be able to further contribute to the amazing NVT community.



Stuart Curlett (Wally)

The Winterling marks Stuart's third stage performance, all of which have taken place at the NVT. His debut was as Danny in *Orphans* last November. He also performed as Salvador Dali in *Hysteria* for this summer's Brighton Fringe. This October he will begin a Masters course at the East 15 Acting School in Essex.



Jonathan Howlett (West)

Jonathan graduated from East 15 School of Acting in 2008 with an MA in Acting for TV, Film and Radio. He has performed in various London Fringe Theatre and at the Brighton and Edinburgh Fringe; his most recent credits include Dan in *Closer* at the Rialto Theatre and Liam in *Orphans* at the NVT. He has featured in numerous independent and feature films and commercial work. His most recent roles include Gary in *The Hapless Lovelife of Jesus Grey* (Winner of Best International Film at the L.A. Comedy Festival), and Den in the recent web series *The Last Superheroes*.



Thomas Hobart (Patsy)

Tom's recent productions include *High Water* (release date spring 2020), *Pickwick and Weller* (NVT), and *Cracks* (Printers Playhouse Theatre).



Charlotte Hesk (Lue)

The *Winterling* marks Charlotte's debut at the NVT. She previously studied Theatre and Performance for three years at the University of Lancaster, graduating last July.

Steven O'Shea (Director)

The Winterling is Steven's eighth directorial production at the NVT following *Speed the Plow* by David Mamet (2011), *Kvetch* by Steven Berkoff (2012), *Old Times* by Harold Pinter (2014), an adaptation of *Hamlet* (2015), *Loot* by Joe Orton (2016), *The Homecoming* by Harold Pinter (2017), and *True West* by Sam Shepard (2018).

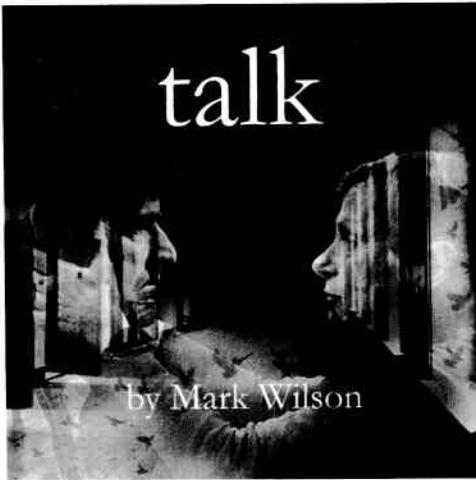
He currently runs the Working Toward Performance drop in acting classes in Brighton: www.workingtowardperformance.co.uk

Jez Butterworth

Butterworth's plays include *Mojo* (1995), *The Night Heron* (2002), *Parlour Song* (2008), *Jerusalem* (2009), *The River* (2012) and *The Ferryman* (2017).



Above (left to right) Mark Lester, Stuart Curlett, Jonathan Howlett, Charlotte Hesk and Thomas Hobart.



February's NVT Production

talk

Friday 14 to Saturday 22 February

written and directed
by Mark Wilson

Set in the 1850s in the criminal wing of Bethlem asylum this is a play about the birth of psychotherapy. It is the story of the struggle between those advocating

traditional and quite Medieval treatment of the mentally ill and those struggling towards an understanding of the centrality of childhood experience and the curative value in articulating it – the curative value of talk. It is a play about stories, but more than that, it is a play about the universal and, indeed, timeless need to be heard.

Constantinople Bistro

Fusing the tastes of the Middle East, the Balkans,
Greece, the Caucasus and Central Anatolia.

51 Norfolk Square, BN1 2PA 10am - 11pm, Mon - Sun
Tel: 01273 777 355

~Est. 1994~

silverado

contemporary jewellery

31 Bond Street, Brighton



Bramble Cottage Retirement Home

01273 565821

Fully Compliant with CQC Standards.
Established Luxury, Retirement Home
Contact Diana Shaw For Further Details

Long or Short Stay & Convalescence Breaks. Large Individual Rooms
All With Colour TV (Satellite TV Available) Lift Servicing All Floors.
Attractive Gardens & Balconies. First Class Food Prepared By 'In House'
Chef. Optional Social Programme. Visiting Hairdresser And Chiropodist.
24 Hour Care By Fully Trained Staff. Family Owned.
Highest Standards of Care, Support & Service



18 Carden Avenue
Patcham, Brighton
East Sussex BN1 8NA
Tel: (01273) 565821
www.bramblecottagebrighton.com



MAIL BOXES ETC.®

- | | |
|--|---|
| <input type="checkbox"/> Print & Copy | <input type="checkbox"/> Packing & Shipping |
| <input type="checkbox"/> Office Services | <input type="checkbox"/> Packing Materials |
| <input type="checkbox"/> Stationery | <input type="checkbox"/> Post & Parcels |

Tel: 01273 70 60 20 www.mbebrighton.co.uk
Email: print@mbebrighton.co.uk 91 Western Road, Brighton. BN1 2NW

NVT Acting Class

Monday evenings at 7.30pm for all levels of acting skills. It will cost you just £5.00 per session (£2.50 for NVT Members). First visit is FREE!

Contacting the NVT

For ticket and performance enquiries only, call the Box Office: 01273 746118, or email: boxoffice@newventure.org.uk
All other enquiries: 01273 808353

Become an NVT Sponsor

Advertise your business to hundreds of local residents with NVT from only £250. For a range of print and web publicity options and opportunities for free show tickets, please contact: fundraising@newventure.org.uk

Supporting NVT

We are a membership club, founded in 1947. We perform established plays, both classical and contemporary, and are a showcase for new writing. If you are interested in joining us, please pick up a membership form in the foyer.

In 1983, NVT bought the freehold of this listed Victorian building which needs constant investment to maintain its integrity. To keep NVT going, we rely on the generosity of the community, to provide donations that are essential to the upkeep of the building and the refurbishment of the main auditorium.

For more information on how you can support NVT. Please contact: fundraising@newventure.org.uk

Many thanks to our current donors and our special appreciation to our major anonymous donor.

COMING SOON IN 2020

14 to 22 February

Talk

written and directed by Mark Wilson

13 to 21 March

Quartet

by Ronald Harwood

directed by Richard Lindfield

17 to 25 April

The Herd

by Rory Kinnear

directed by Charly Sommers

www.ticketsource.co.uk/newventuretheatre

Youth Theatre

(11 to 17 year olds)

Every Friday, 4.30pm to 6.30pm, during term time.

The sessions are led by experienced actors, directors, writers and teachers. The first session is free so you can come and try it out before committing. No experience is necessary and everyone is welcome.

For further information, see www.newventure.org.uk/youththeatre

For enquiries, please contact: youththeatre@newventure.org.uk



**THE
PEBBLE
TRUST**